

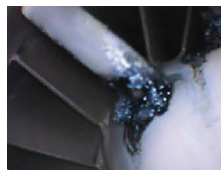
ARTICULATING VIDEO BORESCOPE FOR **POWER GENERATION****THE BORESCOPE  
YOU NEED TO SEE**

“I just love the portability and design of your borescope! We use it more than any of the other scopes at the facility. The 6.9mm 5.0 meter unit handles 90% of my inspection needs. Thanks for the great video borescope!”

ENGINEER, DOMINION NUCLEAR POWER

“This scope works just as well as any of the much higher priced scopes out there, and the image quality is as good as anything we have seen in the past.”

PRESIDENT, GROUND POWER GENERATION REPAIR COMPANY



Carbon Build-up



Internal Inspection

**TURBINE INSPECTION**

Add the VJ-3 video borescope to your arsenal to keep preventive and predictive maintenance on track and reduce downtime. Conduct and document remote visual inspections in conventional thermal plants, such as steam, co-generation or gas or with renewable energy equipment, including wind, hydroelectric and nuclear. Is your turbine due for an inspection? The VJ-3 is ready when you are.

**PUMP INSPECTION**

Use the VJ-3 to access and document inspection of the pumps in the power plant. Effortlessly take photos by pulling on the image capture trigger. Record video by pressing a button with your thumb. Lighting controls are nearby. The VJ-3 will help you identify any issues in your pumps, and you can share the inspection with your team.

**BOILER TUBE INSPECTION**

Conduct regular boiler tube inspections with the VJ-3 video borescope. Identify wear, corrosion, blockage, and other problems so you can stay ahead of issues that may cause downtime. The VJ-3's joystick controlled articulation ensures you will not miss any problem areas.

**HEAT EXCHANGER INSPECTION**

The VJ-3 is ergonomic and easy to use. You can quickly inspect heat exchangers and tubing for pitting, cracking, corrosion, erosion, weld integrity and tube blockages, while minimizing downtime and optimizing planned maintenance.

ARTICULATING VIDEO BORESCOPE FOR **POWER GENERATION**



Full-Color, IPS Anti-Glare LCD Display

High-Capacity SD Storage and USB Connectivity

Joystick-Controlled, 360° Camera Articulation

Video Start-Stop

Ergonomic Pistol Grip Design

IP 54 Base Unit

Rechargeable Li-ion Battery 4 Hour Runtime

On-Board Image Processing

4X Digital Zoom

Image Capture Trigger

Tungsten Braided IP 67 Insertion Tube

Up To 20,000 Lux, 6-Stage LED Illumination



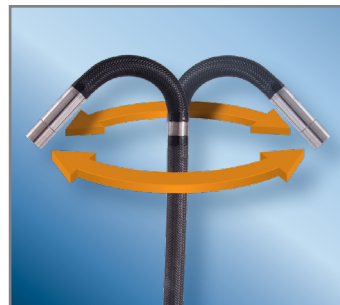
**3.9mm OR 6.0mm DIAMETER**

Available in lengths from 1.5m to 8.0m to suit any application. All insertion tubes feature our patented EasyGlide, 4-layer Tungsten sheathing for smooth entry and exit, and are IP 67 rated for rugged durability.



**ULTRA-PORTABLE DESIGN**

No need for a separate monitor. Our lightweight, compact design has a built-in, full-color LCD display. All image capture, storage and processing is handled within the standalone unit, and the rechargeable Li-ion battery delivers up to 4 hours of cord-free run time.



**DIRECT RESPONSE ARTICULATION**

Designed for responsiveness and accuracy, the direct mechanical articulation never requires calibration, and the camera/LED module stays in place even when your thumb is removed from the joystick.



**UNRIVALED SERVICE AND EXPERTISE**

The VJ-3 is brought to you by the same team of borescope experts that changed the industry 10 years ago with the world's 1st mechanically articulating, joystick-controlled video borescope. Find out why we are still the #1 seller of borescopes in the US.